

Le Kit Mini Standard

Set all artwork @ 25% with a 3mm bleed

QuarkXpress files are preferred. InDesign, Illustrator, Freehand and Photoshop can also be used. All set up as CMYK. Please note, **we do NOT print from PDF.**

Be sure to include all source files, graphics and fonts (as well as those in any supporting EPS files) with your job, using Collect for Output or Preflight.

Overprint Fill / Stroke must NOT be selected on any artwork.

Please provide a hard copy printed colour proof with your files for our reference. Where accurate colour matching is required, you must supply Pantone or printed references. We will match this as closely as possible but cannot guarantee an exact match.

Below is a brief a/w summary, but for more indepth information on setting up artwork please read our a/w explanation pdf.

Fonts

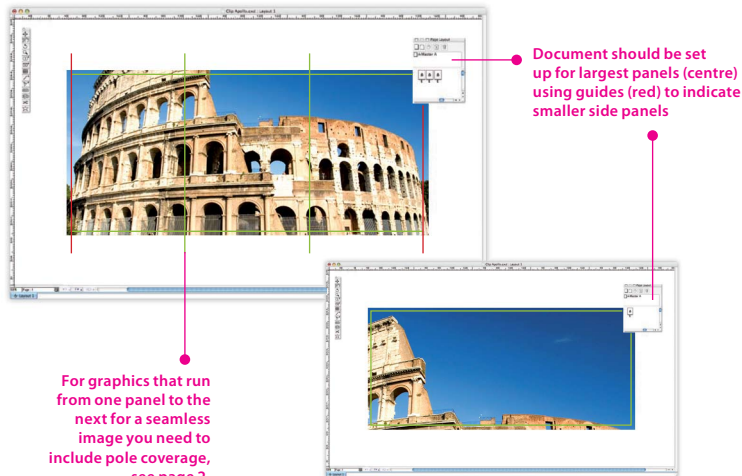
- Illustrator and/or Freehand files must be supplied with text converted to outlines, along with an editable text version and all necessary fonts in case changes are necessary.
- Any language fonts other than English must be converted to outlines.

Photoshop files

- Must be CMYK - please convert any Index, Duotone, RGB or Pantone images, and do not use extra channels.
- Files must be placed into your 1/4 size document at no more than 100% @ 300 dpi.
- Save all images as EPS (encoding JPEG Maximum quality).

Vector files

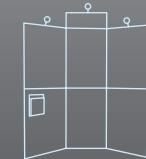
- Must be CMYK
- All logos should be vector files created in Illustrator or Freehand, with Attributes set to 2400 dpi.



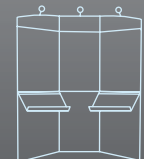
Set All Artwork @ 25%

Header Panel @ 25%: 156.25 x 62.5mm
Full size: 625 x 250mm

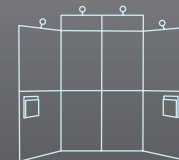
Front Main Panel @ 25%: 156.25 x 250mm
Full size: 625 x 1000mm



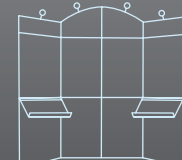
Le Kit Mini Standard



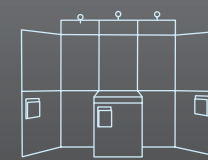
Le Kit Mini De-Luxe



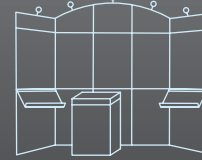
Le Kit Midi Standard



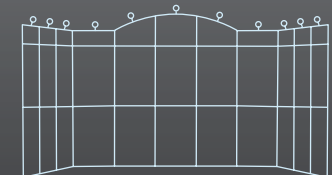
Le Kit Midi De-Luxe



Le Kit Maxi Standard



Le Kit Maxi De-Luxe

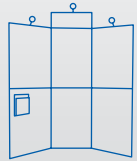


Le Kit Expo

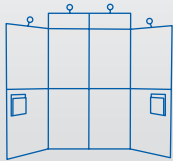
lekit pole coverage

Each angled panel has a different pole coverage.

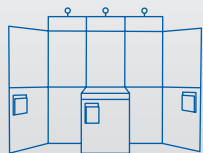
Pole coverage amounts (mm) shown below within the blue circles.



Le Kit Mini



Le Kit Midi



Le Kit Maxi



files accepted

Set all artwork @ 25% with a 3mm bleed

QuarkXpress files are preferred. InDesign, Illustrator, Freehand and Photoshop can also be used. All set up as CMYK. Please note, we do NOT print from PDF.

Be sure to include all source files, graphics and fonts (as well as those in any supporting EPS files) with your job, using Collect for Output or Preflight.

Overprint Fill / Stroke must NOT be selected on any artwork.

Please provide a hard copy printed colour proof with your files for our reference. Where accurate colour matching is required, you must supply Pantone or printed references. We will match this as closely as possible but cannot guarantee an exact match.

Below is a brief a/w summary, but for more indepth information on setting up artwork please read our a/w explanation pdf.



Fonts

- Illustrator and/or Freehand files must be supplied with text converted to outlines, along with an editable text version and all necessary fonts in case changes are necessary.
- Any language fonts other than English must be converted to outlines.

Photoshop files

- Must be CMYK - please convert any Index, Duotone, RGB or Pantone images, and do not use extra channels.
- Files must be placed into your 1/4 size document at no more than 100% @ 300 dpi.
- Save all images as EPS (encoding JPEG Maximum quality).

Vector files

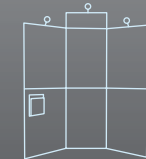
- Must be CMYK
- All logos should be vector files created in Illustrator or Freehand, with Attributes set to 2400 dpi.

techspec

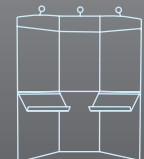
Set All Artwork @ 25%

Header Panel @ 25%: 156.25 x 62.5mm
Full size: 625 x 250mm

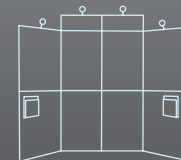
Front Main Panel @ 25%: 156.25 x 250mm
Full size: 625 x 1000mm



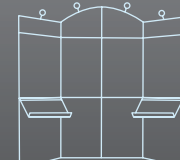
Le Kit Mini Standard



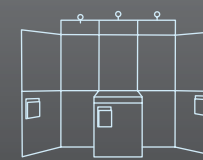
Le Kit Mini De-Luxe



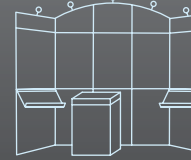
Le Kit Midi Standard



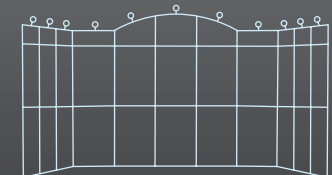
Le Kit Midi De-Luxe



Le Kit Maxi Standard



Le Kit Maxi De-Luxe



Le Kit Expo

ASTEX

Ch. de la Rosaire
CH-1123 Aclens

Tel. +41 (0) 21 703 12 12

Fax +41 (0) 21 703 12 13

mail info@astex.ch

www.astex.ch

